

Flight Information Display System

ECLIPSX™

A total solution.

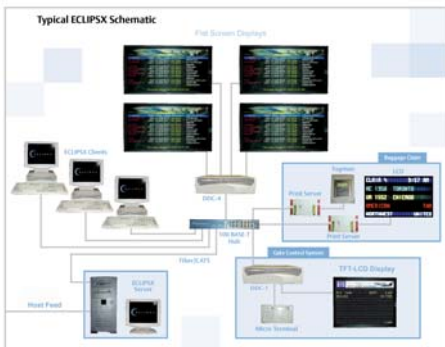
ECLIPSX is a robust Web-Display based solution using a browser for its administrative client. ECLIPSX utilizes the newest industry standard display technology developed for the Web – XML and XSLT – to display flight information more rapidly and effectively than ever before. **ECLIPSX is built on a scalable architecture for growth and is highly adaptable to your specific needs.** ECLIPSX is designed to manage the industry's latest and most complex media-rich display requirements.

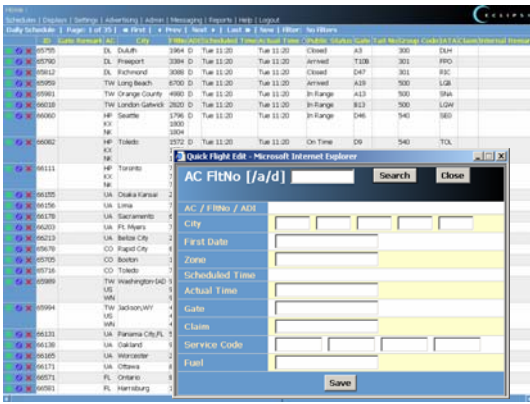
With ECLIPSX, Com-Net is revolutionizing the industry with products, including a display design tool, and an emergency messaging module, which meet and exceed all your needs and ensure nothing but complete satisfaction.



ECLIPSX offers you:

- Powerful network management tools with Simple Network Management Protocol (SNMP)-compliant hardware and application level support via HP OpenView or WhatsUp Gold.
- Easy integration to gate management systems, Integrated Voice Announcement (IVA) systems, Interactive Voice Response (IVR) systems, airline host data feeds, and MUSE/CUTE systems.
- Elimination of screen flicker when information is updated on displays. Only data fields that have changed are refreshed instead of the full screen.
- Convenient display of free-text messages, visual paging, and full-motion video.
- ECLIPSX- Design – the most versatile, user friendly display design tool available
- ECLIPSX-Ad – a multimedia advertising solution.
- ECLIPSX-Announce – a module providing security, check-in counter and emergency messaging
- And much, much more.





ECLIPSX-Display

ECLIPSX-Display consists of the FIDS client/server application.

The client application offers several key features including:

- Pop-up forms which eliminate the need to scroll through the master and daily schedules to view or change information.
- Drop-down menus to select pertinent flight information, such as city, IATA code and gate number.
- On-line Help that includes expanded menu of choices, screen captures for reference, and additional information links.
- A simple pop-up dialog box to let you change text colors and other display attributes such as blinking, bold, underlined or italic.
- A page display tool, which allows any group of monitors to be viewed via any workstation to see how data is presenting itself in real time.
- Numerous standard reports for effortless report generation.

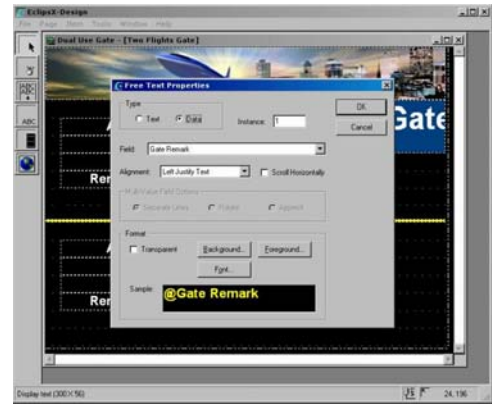
ECLIPSX-Design

ECLIPSX-Design is a new display design tool developed with ECLIPSX-Display

This versatile design application utilizes XML/XSL technology to bypass the rigid page rules typically associated with display-page creation. In fact, ECLIPSX-Design makes designing and changing your displays as easy and intuitive as using a mouse.

The ECLIPSX-Design graphic user interface offers all the tools you would expect from a powerful design package, such as:

- Easy-to-use tool bars, buttons and menus.
- Dynamic sizing of graphics, text and columns.
- Convenient cut, copy and paste tools.
- Live data viewing to instantly see new screen designs.
- Password protection. Only System Administrators are allowed to "publish" newly designed pages.



Versatile Information Display Products

The ECLIPSX product family has been designed to respond to your changing needs with flexibility and ease. Com-Net offers you various modules to complete your system, including advertising scheduling and tracking, seamless connection to other systems, reporting, Web integration and wireless access.

Contact your Com-Net representative today to see how ECLIPSX can work for you.

Com-Net Software Specialists is a registered trade name of Signature Technologies, Inc. ECLIPSX is a trademark of Com-Net Software Specialists. All other trademarks are the property of their respective owners.

Com-Net
A Division of Signature
Technologies, Inc.

3728 Benner Road
Miamisburg, OH 45342
TEL: (800) 899-2638
FAX: (937) 859-7511
sales@comnetsoftware.com
www.comnetsoftware.com

Com-Net
SOFTWARE

